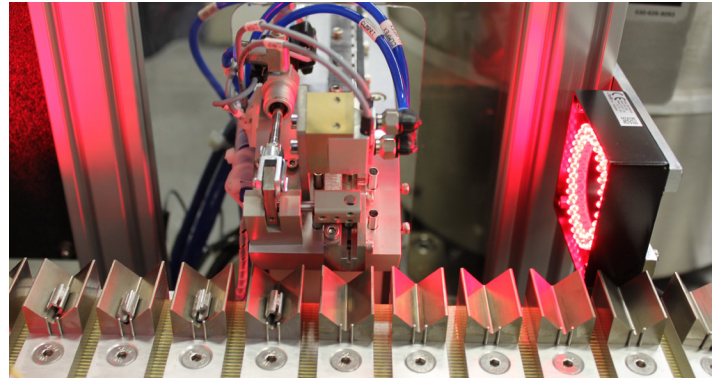


CONSIDERING AUTOMATION?



1. SAFETY & ERGONOMICS

- Is part of the process of producing my product un-safe for my employee?
- Is part of the process extremely repetitive (causing injury to an employee from repeating this process)?
- Could a simple tool help to improve human safety and operation?

2. PRECISION

- Does my product require special handling?
- Does my product require a clean room?
- Is my product hard to reproduce accurately?
- Are there critical measurements needed for process control?

3. SPEED/THROUGHPUT

- Would automation increase the speed at which I can produce my product?
- Is my product complex?
- Are there multiple steps in putting together my product?

4. COST SAVINGS

- Is my product hard to produce reliably?
- Are there processes in producing my product that can be enhanced/made more efficient?
- Do I need to scale up my production?
- Would automation reduce my labor costs?

If you answered yes to more than half of these questions, you could benefit from either a simple automation tool(s) or complex automation system.

CUSTOM MACHINE DESIGN AND AUTOMATION EXPERTISE

WORLD HEADQUARTERS

4600 NW Pacific Rim Blvd.
Camas, WA 98607
USA

(P) 360-693-2600
(F) 360-693-2581
(E) info@sigmadzn.com

SINGAPORE

48 Toh Guan Rd. East
#04-110 Enterprise Hub
Singapore 608586

(P) +65 64651530
(F) +65 64915030
(E) info@sigmadzn.com

 **SIGMADESIGN**
www.sigmadzn.com